



Annual Report
to the Parish 2016
Meeting on January 22, 2017



Meet Christ
Be Christ

St. Christopher's Episcopal Church
2300 Hamline Ave. N, Roseville, MN 55113

TABLE OF CONTENTS

Table of Contents	2
Parish Statistics & Standing Notices	3
Vestry Members	4
Convention Delegates	4
St. Christopher's Staff	4
Agenda for the Meeting	5
Minutes of the 2015 Annual Meeting of 1/24/16	6
Rector's Report	8
Deacon's Report	9
Assisting Priest's Report	9
Music Ministries Report	10
Children's Ministries Report	11
Youth Ministries Report	12
Senior Warden's Report	13
Junior Warden's Report	13
Committee Reports	14
Mission Opportunities Grants and Fundraising Requests	16
Vestry Candidate Biographies	17-21
2016 Financial Recap and 2017 Budget – Pages 22 and 1-7 at back of book	

St. Christopher's Episcopal Church Statistics

(As of December 31, 2016)

Baptisms	2	Confirmations	
Marriages	2	Young People	9
Funerals	6	Adults	0
		Received	1

Members in Good Standing as of January 1, 2016 344

Added to the Parish

By Confirmation	0
Received	0
By Letter of Transfer	0
New Members	8

Active Families in the Parish:

Total December 31, 2016 87

Dropped from Parish

By Death	5
By Letter of Transfer	0
Adult Children of current Mbrs to Inactive	3
Moved to Inactive Status	30

Active Individuals in the Parish:

Total December 31, 2016 84

Active Households in the Parish:

December 31, 2016 171

Total Members in Good Standing as of December 31, 2016

314

Total of Members in Good Standing who are under age 16: 37

Standing Notices

Communion: Any guest who desires to receive Holy Communion may do so.

Baptism: The Sacrament of Baptism is normally only administered to infants, children, and adults who themselves (or whose parents) intend to become active participants in this local congregation. Times for Baptism are: Easter Eve, Pentecost, St. Christopher's Feast, All Saints, and the first Sunday of Epiphany. Baptisms can be arranged for other Sundays by conversation with the Rector.

Burial: The liturgical service of the "burial of the dead" is available to members of any Christian denomination.

Marriage: The Sacrament of Christian Marriage must be arranged at least 90 days prior to the date, and requires at least three counseling sessions.

Membership: Those desiring to become communicant members of St. Christopher's should consult with the rector. An Inquirer's class is held as needed.

Sick: If you are going into the hospital or wish one of the clergy to visit, please call the church office at 651.633.4589. In case of after-hours pastoral emergencies, please call 651.633.4598.

The 2016 Vestry of St. Christopher's

Mary Pendergrass, Senior Warden	(Retiring)	Term Expires January 2017
Jeff Jensen, Jr. Warden	(Retiring)	Term Expires January 2017
Kathy Ackerman	(Retiring)	Term Expires January 2017
Harold Danley	(Retiring)	Term Expires January 2017
Chris Lacher	(Retiring)	Term Expires January 2017
Darlene Cross		Term Expires January 2018
Elizabeth Grayden		Term Expires January 2018
Barbara Swanson		Term Expires January 2018
Jan Fillmore		Term Expires January 2019
Becky Lucas		Term Expires January 2019
Mike Sirany		Term Expires January 2019

Ann DePaolis-Jones, Clerk*
Suzanne Hitchcock, Treasurer*
**Non-voting officers*

Diocesan Convention Delegates

To be Elected in January 2017 to serve through January 2020

Delegates: Kathy Ackerman, Allison Jensen, Jeff Jensen

Alternates: *to be elected from the floor*

St. Christopher's Staff

The Rev. John F. Dwyer, Rector
The Rev. Janet MacNally, Deacon
The Rev. Mary Rowe, Assisting Priest
Karla Cole, Director of Music Ministries
Chad O'Leary, Director of Youth Ministries
Marion Hunner, Director of Children's Ministries
Ruth Thillen, Parish Administrator

2016 Annual Meeting

Sunday, January 22, 2017

AGENDA

Lunch following the Together@9:30 AM Eucharist

11:00 AM (approximate):

Opening Prayers	Father John Dwyer
Election of a Clerk	Mary Pendergrass
Vincent Anderson Awards	Father John Dwyer
St. Christopher's Award	Father John Dwyer
Acknowledgement of Staff	Father John Dwyer
Acknowledgement of Vestry	Mary Pendergrass
Approve Minutes of 2015 Meeting	Mary Pendergrass
Elections	Mary Pendergrass
Wardens	
Vestry	

2016 Financial Report	Finance Committee
2017 Budget	Finance Committee

Senior Warden's Report	Mary Pendergrass
Junior Warden's Report	Jeff Jensen
Rector's Report	Father John Dwyer

Senior Warden's Remarks	Jeff Jensen
Other Business	Jeff Jensen
Adjourn	Jeff Jensen

Prayer for the Annual Parish Meeting

Almighty and everliving God, source of all wisdom and understanding, be present with those who take counsel for the renewal and mission of your Church. Teach us in all things to seek first your honor and glory. Guide us to perceive what is right, and grant us both the courage to pursue it and the grace to accomplish it; through Jesus Christ our Lord. **Amen.**

Minutes of the 2015 Annual Meeting Sunday, January 24, 2016

The meeting was called to order by Father John Dwyer at 11:10 AM. Opening Prayer was led by Father John.

Acknowledgement of Staff: Father John expressed his joy in working with the wonderful staff that includes Ruth Thillen, Karla Cole, Marion Hunner, Chad O'Leary, Mary Rowe, Janet MacNally and Diane Elliott. The children were then dismissed to work on the dramatic sermon.

Election of a Clerk: Allison Jensen made a motion that Ann DePaolis-Jones be elected clerk for the meeting. There were no volunteers from the floor and the motion was approved.

Vincent Anderson Awards were given to: Barb Herman for her work as the chair of the finance team, as a teller, and as a member of the alter guild.

Suzanne Hitchcock led the charge in getting the new kneelers completed and installed and is also treasurer, a teller, an office angel. She also cleans out the refrigerator every week.

Ella Snyder, who has been coordinating the order of mop and dusters, making sure the church is cleaned weekly.

Community Dinner team, all who have worked to provide these meals to the community.

St. Christopher's Award was given to Jerry and Lynn Baxter. For their work on the alter guild, and as tellers for many years. They are reliable and dedicated, warm and loving. Father John thanked them for all their work.

Acknowledgement of Vestry: Jean Crow thanked the vestry for their hard work this year. She gave a special thanks to the outgoing members, Jill Eischens, Mary Friend and Elaine Norling.

Approval minutes of 2015 Minutes: Hearing no corrections of the 2015 minutes, Mary Pendergrass moved that the minutes be accepted as written. Mark Brilowski seconded the motion and the minutes were approved as written.

Elections of Wardens and Vestry: Hearing no new nominations from the floor, Kathy Ackerman made a motion to elect Jeff Jensen as Junior Warden and Mary Pendergrass as Senior Warden. Ebie Richards seconded the motion and it was approved.

Hearing no nominations from floor, Chris Lacher made a motion to elect Jan Fillmore, Michael Sirany, and Becky Lucas, as members of the vestry. Jim Richard seconded the motion and it was approved

2015 Financial Report: Ruth Thillen presented the financial reports accompanied by the members of the Finance Committee. Ruth thanked the team for their assistance. Ruth was pleased to report that for the 2015 budget year, 101% of the amount pledged was brought in. The budgeted income for building use was \$55,625 and we actually brought in \$54,250. This was in part due to not having Sensory Testing use the kitchen, and Sassy Pecan moving to a different location. The total budgeted income for 2015 was \$419,205 and the actual income for the year was \$419,222. We came in under budgeted expenses. We didn't pay the nurse aid for the whole year, but relied on volunteers. Christian education came in under budget. Generous donations for coffee hour and other events helped the pastoral care budget line. Facilities expenses were under budget. We didn't need much snow removal and the heating costs were lower than anticipated. The electric was over the budget as the solar panels were not hooked up and the administrative expenses were a bit over budget. Over all, budgeted expenses were \$419,250 and actual expenses were \$408,008, leaving us with an \$11,214 surplus.

There were no questions from the floor. Ruth offered to answer any questions related to the dedicated accounts after the meeting.

2016 Budget: Ruth Thillen, supported by the finance team, then presented the 2016 budget. The projected income is \$435,361. \$312,158 has

been pledged for 2016. There is a 4% draw from the pooled investment fund (PIF) as recommended by the ECMN. Staff will get 2% raise, the health insurance costs are down 4% and we've added short and long term disability. Requested amounts were met for Christian education and most of the requested amounts were met for facilities. The lawn care line was used to balance the budget. Most of the music and administrative requests were funded including the planned replacement of an older computer. Parish wide costs were left at zero. We are counting on all to honor their pledges. We will not be funding pledge envelopes this year, but are asking for \$5 for envelopes. This may motivate some to change to the automatic withdrawals. Total budgeted expenses are \$435,360, leaving us with a balanced budget. Questions and comments were taken from the floor including questions about the automatic withdrawals and the hooking up of the solar panels.

Senior Warden's Report: Jean Crow shared some of her passions about St. Christopher's including the music, the way the finance team works to keep us transparent and fiscally responsible, the efforts of the Green team in leading us towards becoming a green congregation, our feeding ministries, including the community dinners and giving garden, our worship, and how welcoming we are to others. Jean expressed that it has been an honor and a privilege to serve as a warden.

Junior Warden's Report: Mary Pendergrass expressed her happiness about all St. Christopher's has accomplished this year. This could not have happened with our staff, the many volunteers and financial contributions of many. She offered her thanks to all.

Rector's Report: Father John Dwyer said his written report is on page seven in the annual report. He is pleased with the continued good stewardship of this place, and mentioned the courtyard, the kitchen, our solar panels, the parking lot, and the work of the Order of the Mop and Dusters, which is a part of stewardship. He reminded us to sign up on the board as part of the mop and dusters cleaning team as this is a

community effort. Father John reported that one of our mission opportunities, Loaves and Fishes is no longer active as the site was closed due to safety concerns. We thank the leadership of the Ingram's and all those who worked with Loaves and Fishes over the years. We are going to be having a Mardi Gras party fund raiser on Tuesday, February 9th with the proceeds going towards Habitat for Humanity this year. There will be a chili contest and a Jell-O contest for the children. Information will be available about Habitat for Humanity. Fr. John is pleased by the excellent stewardship by staff, vestry and finance team this year. He is happy about bringing in 100% of pledges and thanked the congregation. He thanked the vestry, especially the three retiring members. He also thanked Jean, stating she has been a joy to work with, is always positive and upbeat and has a real passion for this place. Fr. John thanked all for letting him be here, and said it is a joy to be our rector.

Senior Warden's Remarks: Mary Pendergrass thanked us for electing her to be warden. She thanked Jean, and vestry. Mary said we had a great 2015 and with our help, 2016 can be even better. She looks forward to working to continue St. Christopher's mission.

Other Business: There was a brief discussion about getting a microphone for choir and nursery.

Mary Pendergrass made a motion to adjourn at 11:58. Motion was seconded and the meeting was adjourned.

Respectfully submitted,
Ann DePaolis-Jones
Clerk of the Meeting

Rector's Annual Report—2016

We experienced a joy-filled and productive year here at 2300 Hamline Avenue N! 2016 was filled with heartfelt and local missional projects, sacred and impactful worship, as well as strong managerial oversight of our financial resources. Here are some highlights of our year together:

- Our Green Team spearheaded a tremendous leap forward in our efforts to care for God's Creation this year:
 - New (and beautiful) recycling bins were placed around the facility, made possible by a grant from Ramsey County.
 - We switched from disposable nametags to re-usable name buttons.
 - Our solar panels were connected and are producing energy (!)
 - We had a successful fundraiser to purchase LED light bulbs, which have been installed facility-wide.
- Our Giving Garden produced over 700 pounds of fresh produce, all given to our neighbors who utilize Keystone Food Shelf.
- Our monthly Community Dinner continued to grow in popularity and import.
- The parish endorsed the "Move to Amend" movement.
- Bishop Brian visited us twice this year!
 - In January he visited with the parish and vestry, as well as Confirmed 10 of our parishioners.
 - In July, Bishop Brian Celebrated and Preached at our Together @ 9:30 service, and Blessed my marriage to Ben Riggs.
- We assisted in having Diane Elliott ordained to the Diaconate.
- We continued to care for our facility by:
 - Beginning a yearly facility wide professional cleaning of our (fairly) newly installed carpet.
 - We repaired/rebuilt our elevator

- The engraving on our Columbarium stones was improved by adding paint to make the names more legible.
- We created a "Welcome to St. Christopher's" booklet, which has been a popular take-home item.
- We had a successful and profitable Silent Auction and "Small-Bites/Big-Bids" party, providing capital for our Mission Opportunity Grant Fund to continue its important work.
- Our combined summer service schedule returned. The parish survey at the end of the summer gave overwhelming support for its continuation.

We can be very proud of the work we have done this past year living into our core missional, ministerial, and managerial focus, which only creates more energy and excitement for this new year!

Our Stewardship Campaign was very successful this year. More details about this can be found later in this booklet, but our pledging units have remained the same (120) and our yearly pledge income has increased by almost 4%. That is a very good result. Where we have a challenge in our budget is in "other revenue". The Vestry and Finance Team are going to closely evaluate how to utilize our facility and grounds as a better resource for income than we have this past year. This is good and forward-thinking stewardship and I am excited by these efforts.

Like any faith community of our size, we have our challenges, but they are far outweighed by all the good and solid and hopeful and prayerful work on which we continue to focus: being Jesus' hands and eyes and ears and feet, right here in Roseville. It is a joy and an honor to be your rector.

Blessings,



Deacon's Report

It seems hard to believe that it is time to write an annual report. The days, weeks and months do seem to fly by at an alarming pace. This past year saw a great deal of activity as we as the faith community of St. Christopher's reached outside our doors, into our neighborhood and joined the Holy Spirit already at work.

Our community dinners continue to grow and the community that comes together for nourishment of the body with well prepared food (thank you Vant and kitchen crew!) but also nourishment of the soul as found in relationships formed around a dinner table. We are looking to add to our monthly offerings, perhaps the occasional turn at Bingo as we seek to serve and support all our neighbors.

Lent into Eastertide saw us as a faith community seeking to learn about our Muslim neighbors in a variety of ways. First by learning about the complex and multi-faith reality of Jerusalem, then by exploring our own family's immigration stories and then engaging with speakers from the Islamic Resource Group who joined us for talks about their faith as well as their faith communities. The project for the year was capped off with the display of lawn signs wishing out Muslim neighbors a Blessed Ramadan. Some of us continue to be in conversations with the folks we met through our program, underlining the importance of building lasting relationships. We will continue this work in a different venue this Lenten season. If you missed the chance to purchase a "Love your Neighbor" sign, I can and will make a second run sometime in February or March, I will let you know through the Christ-O-Gram.

While our intentional prayer has become a bit smaller since our intern left, it does still meet on the 2nd and 4th Sundays of each month in the chapel. I would invite you all to join us as we pray with heartfelt commitment for us, our community, the nation and the world in this unsteady time. Pray. Pray often. Pray without ceasing for peace in the world.

Our Youth Group has begun a series of discussions that center around the ECMN's mission opportunity to dismantle racism that I am including in my report as well because this does indeed center on reaching out to our neighbors. The year will capstone with a pilgrimage that will visit the sites of some of the greatest struggles for civil rights in our country. They will end their trip in Washington D.C. hoping to meet with Congressman John Lewis as well as our Senator(s) Franken and Klobuchar. Please keep them in your prayers as they take on this important endeavor.

We live in interesting times as the saying goes and there is real fear and anxiety among many of our neighbors as we begin to travel uncharted waters in our country. Please hold our entire community, both those of us here at St. Christopher's as well as those outside our doors in your prayers. May we all have the grace to seek and serve Christ in all people.

*Blessings,
Deacon Janet*

Assisting Priest

Serving at St. Christopher's continues to be a very special privilege. It is a community filled with individuals seeking an ever relevant understanding of what it means to be part of the Jesus movement and what it means to seek Christ's presence in our midst.

During the past year, our SWAT (Single Women All Together) group has enjoyed learning more about the lives and ministries of some members of our congregation.

Michael Sirany talked to us about his work as a spiritual director. Pete Lee shared fascinating stories about the Como Zoo animals. Leslie Norton answered our medical questions. Lyn

Lawyer talked about her work in the Diocese as a deacon, and about her adventures with a Rhodes Scholar.

At another one of our luncheons, I invited Fr. John to join me in having the members fill out our funeral planning forms. Unfortunately, he was nicer than I had planned to be and let them take the forms home to fill out and return at their own convenience. He has obviously never taught middle school!

Aside from my work with SWAT, I continue to assist with celebrating, preaching, and pastoral care as needed, and I am looking forward to continuing to do so in 2017.

The Reverend Mary Rowe

Music Ministries

Music has long been a way for us to praise our Maker, to exult in the beauty that surrounds us, to proclaim our joy, our thanksgivings and our lamentations. Our musical expressions can be as grand as an Easter morning's triumphal anthem, or as simple as a quiet melody. Our worship together at St. Christopher's is enlivened by the musical offerings prepared by our very own parish musicians. Most of them meet weekly throughout the program year and all of them work very diligently to present their very best. In 2016, they have all grown more accomplished in their musical expression, nurtured one another on the journey and shared in the laughter and fellowship that naturally develops when a group of people work so closely together.

The **Parish Choir** rehearses and sings about forty weeks each year. That time commitment of four hours a week or more throughout those forty weeks is really only rivaled by the time commitment of the Vestry and wardens. The choir faithfully leads the congregation in song, and prepares weekly anthems and festival music for Easter and Christmas. Additionally, we offer

an evensong and our beloved Lessons and Carols each year. This year, we've added some new members and are enjoying the feeling of being a bigger, fuller choir. We are ably supported by our section leaders, AJ Lund, Katherine Johnson, Tom McNellis and Katie Miller. Katie joined us as our soprano section leader in September and presented a fabulous recital of songs, arias and showtunes in November. All four of the section leaders will join me in recital at the end of January for a set of "lovesong waltzes" by Johannes Brahms. These young people bring collective musical expertise, creativity and good humor as they enable us to tackle projects we otherwise might find too daunting, as well as to learn music more quickly and sound quite fantastic. Additionally, on any given Sunday, there might be a handful of singers absent for some reason, and those section leaders enable the volunteer singers to be absent without feeling guilty about abandoning their section. This year's Lessons and Carols service featured music from all over the world. Not that most Christmas music isn't from all over the world, but this year, the selections were a bit off the beaten path. It was a tuneful and fun-filled evening.

The **Handbell Choir** has developed musically this year as well. It takes quite some doing to go beyond just playing your two or three notes to fitting them into the shape of each musical phrase within the whole piece. There's a fresh challenge every week! We have a wide range of experience, from music majors and piano players to those who've never done anything musical at all. The musically gifted folk are very patient and helpful and we all enjoy the process of learning and bringing the printed music to life.

Unfortunately, we've had to put the **Archangels** on hiatus for the time being. Our young families are always challenged for time and energy; and with our numbers down, we felt that the weekly practices placed undue hardship on them. We will continue to look for ways to offer these children the opportunity to be musical and will reform the group as soon as possible. And the **Company of Heaven** exists in a different form

this year. They come together during youth activities to create something for the enhancement of our worship, though over time, that may not be entirely musical. We spent the fall experimenting with playing wine glasses – different levels of water create different pitches as you run your finger around the rim of the glass. Most of our mothers disapproved of such behavior when we were young. But fun was had by all and, with the help of Cheryl Bailey's flute playing, we worked the resultant ethereal sounds into a lovely carol at Christmastime. Future plans include some experimenting with the Orff and percussion instruments and something dramatic for the Easter Vigil.

The nature of musical groups is cyclical – one year you have too few chairs, the next you have too many. While it would be terrific to have enormous choirs, and the process of choosing music for bigger groups would be so much easier, I actually enjoy the creative challenge of finding interesting new music for the participants we have. And it is my great pleasure to serve at St. Christopher's and work each week with the wonderful and wonderfully talented musicians of our parish. We are all so blessed by their gifts and their generous hearts. It has been an inspiring and fulfilling year.

Respectfully submitted,
Karla Cole
Director of Music

Children's Ministries

We began the year with our 4th annual dramatic sermon, where we enjoyed the fabulous talents of two choir members narrating while the children demonstrated the creation story. Kudos to Karla Cole for finding a creative way to engage our young, small population! Our annual visit to Episcopal Church Homes changed form this year as we played Bingo with some of the residents followed by a trip to Midway Bowl for bowling and pizza. This event provides an opportunity for the children to reach out to the church home community while also building community

amongst themselves. The Archangels Choir participated in the Lent 1 liturgy as well as Easter and Pentecost, and we began a new tradition of tying fleece blankets for our graduating seniors - both Kevin and Austin expressed their appreciation.

Switching gears for summer, we began with our first ever movie night, "Family Fun Finding Nemo." We had themed crafts and snacks while we watched the Disney film, "Finding Nemo." In July we enjoyed a fun-filled week of VBS, "Surf Shack: Catch the Wave of God's Amazing Love."

After our summer hiatus, we dove into the new program year with the Hayride and Young Life Sabbath in October. Our Sunday School children continue to be combined in one classroom with ages 4-10 exploring Godly Play stories. The Archangels Choir made their debut in October with Orff instruments, and they sang on December 18th. Now the Archangels will be on hiatus until we have more participants.

As we begin a new year, we look forward to starting a new monthly opportunity: Children's Chapel. This will take place on the first Sunday of each month during the first half of the 10:30 service, and it will replace Sunday School on those Sundays. This program came about as a response to feedback from families that our Sunday schedule makes for a long morning, and the children (and therefore parents) are struggling in the pews for an entire hour.

We also look forward to putting away our Alleluias in February, and we hope to return to the church home in March. We have three seniors for whom we will be tying fleece blankets in the spring.

Following budget cuts that reduced the Children's Ministries Director's hours to 10 per week, there was concern about Vacation Bible School. However, thanks to a Mission Opportunity Grant that will cover my additional hours, we will have VBS in July. Please invite any children that you know!

With our numbers dwindling, the challenge is to create programming that meets everyone's needs at once while remaining versatile enough to work with one child or six on any given Sunday. I am very grateful to the volunteers that keep our Sunday School program running smoothly: Kathy Ackerman, Jean Darnell, Carol Duff, Craig Hunner, and Chris Huntley.
Nursery

We continue to offer nursery care during the 10:30 (and 9:30) liturgy on Sunday mornings. It is being utilized about 2-3 times per month, and I am very appreciative of the dedicated volunteers who continue to welcome our youngest children during our liturgy: Janet Campanaro, Bill Cross, Jean Crow, Mary Friend, Connie Hendrick, Allison Jensen, Becky Lucas, and Ebie Richards

Respectfully Submitted by **Marion Hunner**,
Children's Ministries Director

Youth Ministries

STRENGTHS

Growth. We remain a growing ministry, with several of our youth bringing their friends (on a regular basis) to our gatherings, and the addition of three new regular attendees.

Parish Involvement. We have made a concerted effort to become more active within our faith community through regular participation in our Community Dinners; Gifts of Hope campaign; weekly worship services and special liturgies such as the Service of Hope and Reconciliation, and Lessons and Carols; baking Communion bread; and stepping up when new needs arise.

OPPORTUNITIES for GROWTH

High School to College Transition. We would like to be more diligent as a youth community about keeping contact with our graduates once they move on to their new adventure.

Collaboration with Other Youth Groups. We are a small youth community, with very consistent participation by its members, with regard to regular Sunday and Wednesday programming. However, planning special events presents obstacles as 'critical mass' is oftentimes hard to achieve. This is where collaboration with other youth groups, large and small, is critical. We have begun this work by becoming more deeply involved in Greater Northern and St. Paul TECs. We will continue by participating in a Peer Ministry Retreat with several other parishes this month, and by hosting a diocesan middle school retreat during the first weekend in May.

Volunteerism. With the reduction of our youth minister's hours, there is an opportunity for individuals and families to become more active in being part of youth programming. However, due to other commitments and scheduling constraints, this is an increasingly difficult opportunity to achieve.

THREATS

Funding. A reduction in parish income has put restraints on the depth and breadth of programming, without the time and treasure of parents. One of the most beautiful parts of being part of a faith community is the statement that our children and youth matter to all of us and are supported by all of us. With funding reductions, a sense of "we're all in this together" can appear as lost, since parents of the participating youth are increasingly asked to make up the difference in cost.

Chad O'Leary, Director of Youth Ministry

The Senior Warden's Report

St. Christopher's has accomplished many things this past year. Some of the highlights of the year follow.

We continue to become a greener church as Excel Energy finally connected our solar panels to the grid. The Green Team held an LED Light Bulb Fund Raiser and we raised enough money to buy the light bulbs, and pay for installation of the bulbs in the lower narthex fixtures, as well as the highest fixtures in the chancel area. We replaced fluorescent bulbs in the coves along the sides of the sanctuary with LED bulbs, and the pre-air conditioning louvres there were fixed closed, holes were sealed and insulation was applied. This has made the church brighter, eliminated some of the freeway noise, and now heat in the winter and air conditioning in the summer can no longer escape there. We will save more energy.

The Giving Garden supplied several hundreds of pounds of fresh vegetables to Keystone Food Shelf.

We worked on a house for Habitat for Humanity and continued volunteering for First Nations Kitchen.

Our own Community Dinner continues and grows, furnishing food and fellowship for St. Christopher's neighbors.

We lived within our 2016 budget and even managed to retain approximately \$4,500 of the funds from our surplus that carried over from the 2015 budget. I commend Ruth Thillen, our Parish Administrator, for all her hard work in keeping us on track with the budget and even helping us to save where we can.

My thanks and appreciation to the congregation for their generosity in pledging for the 2017 year; to all the volunteers who help with our outreach efforts; those who help with the chores that keep our church in good physical shape and our grounds beautiful; those who contribute to

our weekly services; and those who contribute to helping with administration tasks so that Ruth doesn't have to literally do it all. I want to thank Jeff Jensen and all the Vestry for all their help and for making my year as Senior Warden much easier than I expected. And last, but not least, I thank Father John for all his help and support. I don't think I could have done this without him.

Mary Pendergrass

The Junior Warden's Report

I have been thankful for the opportunity to serve St. Christopher's as Junior Warden this past year. Much of the good work cultivated in past years continued to shine through this past year. We truly grow and serve others through the ministries that the people of St. Christopher's fund and participate in.

Our newly designed Giving Garden produced more than 700 pounds of vegetables that were delivered to the Keystone Food Self last year. The feeding ministry that takes place at Community Dinners monthly continues to grow and nourish body and soul for those that participate.

Since March 2016, the solar panels have produced more than 17,000 kilowatts so far, saving 35 tons of CO2. The replacement of lights in the church with LED bulbs also is saving money and energy.

The opportunities to listen to and participate in music at St Christopher's has continued. Whether it is the musical groups within St Christopher's or others that share their talent in our church, we are blessed by those who bring their talents to that ministry.

Although I raise these up as highlights, there are many ministries like Altar Guild, Knitting Ministry, Meals on Wheels, Royal Order of the Mop and Dusters, Tellers, Single Women All Together and First Nations Kitchen where the

people of St. Christopher's help in doing God's mission in the world.

St. Christopher's has done great this past year and I hope that I can help continue that work in the coming year.

Jeff Jensen

Team Reports

Green Team

God's creation is His gift to us.

Our mission is to advocate for and practice protection of the environment (our home), to preserve God's creation for future generations.

2016 was a great time to be Green. The Green Team has been involved in a number of different projects including:

- Giving Garden: Our newly designed garden is producing food. Over 750 lbs of vegetables have been delivered to the Keystone Food Self. Take a look at the beautiful finished garden and solar panels on the roof above.
- Solar Array Completed and producing electricity: The solar array was activated last April and has been producing electrical power and revenue as projected.
- Earth Day: An Earth Day celebration service and presentation by the Green Team was completed. Parishioners enjoyed healthy treats of yogurts, fresh fruits and gluten free baked items.
- Recycling Bins: A \$5000 grant was obtained for new recycling bins to be placed throughout the church.
- Adopt a Highway: Green Team members and friends participated in a trash clean up around the church property and a quarter mile up and down Hamline Ave. Many garbage bags of trash were collected for pickup by the city.

- Christmas Light Recycling: Many bins of old Christmas lights were collected at St. Christopher's. These lights were recycled by adults with disabilities at local vocational centers.
- e-Traveler* Messages: Green Team members have contributed relevant green issues to the e-traveler on a monthly basis.
- LED Lighting installed: A room by room audit of lighting and energy use was completed. Energy efficient LED lights have been installed. We are monitoring St. Christopher's electric bill to evaluate overall cost savings for the church.

The Green Team meets on the second Wednesday of the month, 7 pm Parish Hall. Please free to Join us!

Joel Norton

Memorial Book

The Memorial Books have been updated for 2016. There was little activity this year, with less than 10 entries. The five red books are located in the Library on the top shelf.

Ella Snyder has passed the Memorial Books upkeep to Karen Hanna. Many thanks to Ella for her 20 years of dedicated work to get the Memorial Books in print and updated yearly, and for making an easy transition to me!

I am also maintaining the In Memoriam Books in the Library (with Celtic Crosses on the front), which contain funeral bulletins and/or obituaries of members buried from St. Christopher's (1999 to present). Cap Hanson started these books many years ago. If you have any questions, please feel free to call Karen at 651-488-7142.

Karen Hanna

LED Bulb "Adoption"

Donors:

Our sincere thanks to those listed here, for your donations of funds toward our goal of changing all the lights in the church building to LEDs.

Ross & Kathy Ackerman
Mike & Carol Ammermann
Mark & Wendy Brilowski
Sally Brown
Janet Campanaro
Loren & Pamela Case
Karla & Matt Cole
Jean & Scott Crow
Harold & Barbara Danley
Jean & Rick Darnell
Joe Fear & Rachel Herring
Caryn Fox
Joyce Goedeke
Bob Haines
Bill & Karen Hanna
Susan Hanson
Connie Hendrick
Barbara Herrmann
Gene & Suzanne Hitchcock
Dave & Joan Ingram
Allison & Jeff Jensen
Larry Jones & Ann DePaolis-Jones
Barbara Kent
Carl & Jessica Kuhl
Alexander Kun
Lyn & John Lawyer
Pete & Cindy Lee
Rev. Janet & Bill MacNally
Steph Mann
Debbie & Jeanna McLoughlin
Ernie & Jill Miel
Robin Monahan & Becky Lucas
Elaine Norling
Mary Opsahl
Mary Pendergrass
Ebie Richards
Don & Julie Shiek
Mike & Adrienne Sirany
Pete & Ella Snyder
Todd & Lisa Spiro
Barbara Swanson
Sue Triebenbach

Luke Truax
Bruce & Cheryl Warkentien
Beverly Webster
and several anonymous donors!

Endowment Fund Report

Our Endowment Fund is invested in the Pooled Investment Fund (PIF) of the Episcopal Church in Minnesota.

At the beginning of 2016, the Fund balance was \$383,575.42.

We took a draw of 4% (which is recommended by the Trustees), for a total of \$21,675.64 over four quarterly draws.

We also took out \$40,000 to pay for the repairs to the Elevator. OF THAT amount, \$14,100 was covered by insurance (after \$500 deductible). It was received in late December, and has been deposited into the PIF account this month.

The fund gained \$30,964.86 in interest over the year. This is a gain of \$9,289.22 after replacing the 4% draw.

The Fund ended the year with \$352,864.64.

MISSION OPPORTUNITY GRANTS 2016

St. Christopher's Mission efforts are all funded from a dedicated account, the money raised through specific fundraising efforts through the year. Our dedicated account for Mission Opportunity Grants had the following activity this year.

Beginning Balance	\$12,651.29
Ending Balance	\$13,121.02

Income Received:

Mardi Gras Party	\$ 1,224.00
Corn Feed	\$ 30.00
Silent Auction	<u>\$ 7,047.49</u>
Total Income	\$ 8,301.49

Expenditures:

First Nations Kitchen	\$ 800.00
Meals on Wheels	\$ 300.00
In House Feeding Ministry	\$ 2,500.00
Youth Formation	\$ 1,000.00
Habitat for Humanity	\$ 1,224.00
Habitat for Humanity	\$ 1,276.00
Administration Charges	\$ 121.71
Silent Auction Expenses	<u>\$ 610.05</u>
Total Expenditures	\$ 7,831.76

FUNDRAISING EVENTS in 2016

<u>Request Date</u>	<u>Beneficiary</u>	<u>Date of Event</u>
1/6/16	Habitat for Humanity	2/5/16
5/10/16	Mission Opportunities	11/5-6/16
6/13/16	LED Light bulbs	Summer
6/28/16	Keystone - School Supplies	8/1-14/16

Vestry Candidate Biographies



Candidate for Senior Warden: Jeff Jensen

How did you come to be a parishioner at St. Christopher's and when?

After being a member at Epworth United Methodist for many years, I began attending St. Christopher's regularly in 2005 and became a confirmed member of the Episcopal Church in 2009. Maybe like John Wesley, I always was really an Episcopalian.

How has St. Christopher's shaped your relationship with God and this community?

I have always accepted the world with all its diversity of beliefs and life circumstances. St. Christopher's has allowed me to worship and better love all in their diversity of being.

About what are you passionate here at St. Christopher's?

I am passionate about seeing St. Christopher's thrive in an ever-changing world and excited to see how we can serve our St. Christopher's community and the communities that surround us.



Candidate for Junior Warden: Cindy Lee

How did you come to be a parishioner at St. Christopher's and when?

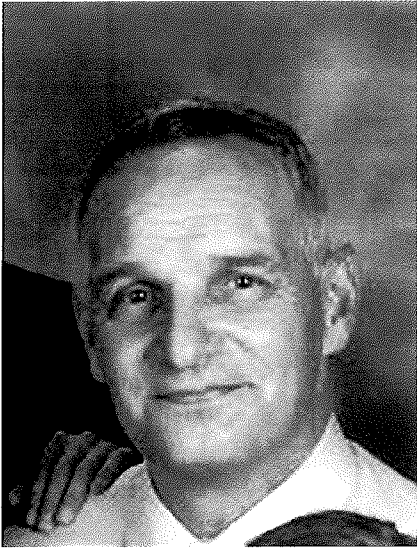
I am pleased and honored to be nominated for Junior Warden this year. I have been a member of St. Christopher's since 1987, when Pete and I moved to nearby St. Paul's Como neighborhood. We found St. Christopher's and very quickly decided that its vibrant mission, programming and parish community were the right fit for us. Since then, I have been active in various ministries, including serving on the vestry in the late 1990s, serving as Junior and Senior warden in 2000-02, as a member of the stewardship and renovation committees, and most recently as usher, teller, Finance Committee member and on the Community Dinner team.

How has St. Christopher's shaped your relationship with God and this community?

My spiritual journey has been nurtured and strengthened during these years at St. Christopher's. My relationship with God has been shaped here in many ways, especially in the areas of prayer, bible study and my own spirit of giving. Also, I have recently retired from a career in public and nonprofit service in the area of affordable housing development. Working for a mission-driven nonprofit firm has greatly strengthened my call to service.

About what are you passionate here at St. Christopher's?

I am especially passionate about St. Christopher's worship ministry, community dinners, social justice ministries, and all of our children, youth and adult education ministries. I believe that advancing St. Christopher's mission is particularly important in this moment in time, and I look forward to this opportunity.



Candidate for Vestry: Mark Brilowski

How did you come to be a parishioner at St. Christopher's and when?

I joined St. Christopher's when we moved from Wisconsin to my wife's home here in the Twin Cities. Although I was raised in the Catholic Church, after attending St. Christopher's for a few years I was confirmed into the Episcopal Church.

How has St. Christopher's shaped your relationship with God and this community?

Being a member St. Christopher's has enabled Wendy and me to raise our children, and be members in a community, that we consider to be our family. The welcoming and non-judgmental nature of this church and congregation is something that we feel is very special. St. Christopher's is an integral part of our family life.

About what are you passionate here at St. Christopher's?

I have always believed in the philosophy of "pay it forward" and I believe that serving

St. Christopher's church and congregation is something that I am happy to offer to our community. I am passionate about the opportunity St. Christopher's has given us to raise our children in a forgiving, loving, and non-judgmental spiritual community. I enjoy and look forward to opportunities to support our church family.



Candidate for Vestry: Karen Hartman

How did you come to be a parishioner at St. Christopher's and when?

My husband and I came to St. Christopher's about 22 years ago when I was pregnant with our second child. We were looking to find a permanent place of worship and were "church shopping". We found ourselves returning to St. Christopher's due to the welcoming people and sense of community and have been actively involved ever since.

How has St. Christopher's shaped your relationship with God and this community?

I grew up in the Episcopal Church, but it wasn't until I was an adult that I began to appreciate the church and its acceptance of everyone regardless of where they are on their spiritual journey. I have found myself drawn closer to God and with that a greater appreciation of the community that St. Christopher's has provided our family. Over the many years that we have attended St. Christopher's, I have been involved with teaching Sunday school, VBS, Silent Auction, the Community Dinner, the Green Team, and part of the Altar Guild. Because we have no family in Minnesota we have always considered the church our extended family. I loved that when my boys were younger and they walked into church, the parishioners knew them by name, asked them about what it was they enjoyed doing and demonstrated genuine care for them - and still do!

About what are you passionate here at St. Christopher's?

I am passionate about the youth at St. Christopher's. Not only are the youth the future of the church but they bring energy and life to a church. I am also passionate about the future of our earth and ways we can make a greener footprint not only at St. Christopher's but in our everyday life.



Candidate for Vestry: Chris Huntley

How did you come to be a parishioner at St. Christopher's and when?

We started coming to St. Christopher's back in 2009. We had just baptized Amelia at St. Rose, but we were becoming disenchanted with some of the Catholic ideals. We started church hunting and found a great and welcoming home here at St. Christopher's.

How has St. Christopher's shaped your relationship with God and his community?

I grew up in a family that didn't prioritize religion and because of that I didn't spend much time or have a connection to our church. Since my time started at St. Christopher's I find myself connecting more with God, and connecting with the awesome community here at St. Christopher's. In the past couple of years I have taught and assisted in Sunday School, ran the science station at VBS, participated in the chili cook-off, participated in the hayride, and many other church events. Still, most people still know me as the father to those three beautiful kids! My family is my life, and I love that my kids are connecting to God at an early age, and part of a community that is caring, kind, and thinks of others before themselves.

About what are you passionate here at St. Christopher's?

My biggest frustration, and what I would love to tackle, is the lack of families with young kids. Our Sunday School, and Archangels choir numbers have been dwindling in recent years, and I want to change that. I want my kids to have friends here at church, and bring more youthful energy to our youth activities.

STEWARDSHIP and BUDGET NARRATIVE

Stewardship:

Our Stewardship campaign resulted in a very positive response. Here's the raw data:

In 2016 we received 120 pledges totaling \$312,878

In 2017 we have received 120 pledges totaling \$324,539 (a 3.7% increase)

9 pledges from 2016 are not pledging in 2017, totaling \$10,455 lost

9 new pledges came in for 2017, totaling \$22,641 gained

Of the returning pledges:

39 pledges remained the same, totaling \$58,199

55 pledges increased, totaling \$203,432 (an increase of \$14,489)

17 pledges reduced, totaling \$40,267 (a decrease of \$15,014)

The average pledge for 2017 is \$2,704

The median pledge for 2017 is \$1,800

The breakdown of our 120 pledges is as follows:

\$100 - \$500	16 pledges
\$501 - \$1,000	19 pledges
\$1,001 - \$2,000	31 pledges
\$2,001 - \$3,000	20 pledges
\$3,001 - \$5,000	17 pledges
\$5,001 - \$10,000	14 pledges
\$10,001 & above	3 pledges

Budget:

Income from all Offerings is \$7,882 less than 2016, and \$36,035 less than the Requested Budget

Income from Building Use is \$4,603 less than 2016, and \$9,450 less than the Requested Budget

Our 2017 Requested Budget had to be reduced by \$45,485.

Some of those reductions came from:

Giving no raises to the staff

Reducing from 20 hours to 10 hours per week for our Children's and Youth

Ministries Directors

Reductions in Facilities Expense

Reductions in the Music Budget

Reductions in Administration Expenses

We believe this lean budget created by the Finance Team and approved by the Vestry is fiscally responsible based on the reality of our Stewardship campaign, our the present usage of our facility to generate revenue, and represents who we are at this time in our history.

St. Christopher's Episcopal Church
2015 Financial Recap
and 2016 Budget

	A	E	F	G	H
1		2016	2016	2017	2017
2		Mid year	FINAL	<i>Requested</i>	<i>FINAL</i>
3		Adjusted			<i>BUDGET</i>
4	Income:				
5	Offerings				
6	401 - Prior Year Pledges	1,500	1,197	1,200	1,000
7	400 - Pledges Made--Current Year	312,758	285,418	360,406	324,539
8	417 - Pledges - Prepaid		26,660		0
9	405 - Plate Offerings	11,000	8,658	11,000	10,000
10	406 - Special Offerings	8,000	7,177	5,000	4,000
11	404 - New Pledges Current Year	1,500	3,725	1,000	1,000
12	402 - Surplus 2015	11,214	6,570	3,000	4,644
13	410 - Transfer from Children's Ministries	1,400	1,400	1,500	1,500
14	413 - Transfer from MMS Reserve	5,906	5,906	0	626
15	408 - Draw from Pooled Investment Fund	21,675	21,676	20,000	19,763
16	Total Offerings	374,953	368,387	403,106	367,071
17					
18	Building Use				
19	430 Bldg Use--MN Chinese Day Care	31,955	31,955	34,860	34,860
20	431 Bldg Use--Flute Lessons	1,250	1,665	600	600
21	432 Bldg Use--Sat. OA.	420	785	500	500
22	433 Bldg Use--Sensory Testing	1,000	1,000	1,000	1,000
23	434 Bldg Use--Tuesday OA	420	421	420	420
24	435 Bldg Use - State Fair Park-n-Ride			1,200	1,200
25	436 Bldg Use - Kitchen Use	11,200	570	11,200	2,000
26	437 Bldg Use--Bonsai	600	400	1,200	1,200
27	438 Bldg Use--SatSang/Meditation	300	440	300	300
28	439 Bldg Use--Wed AA	900	700	900	800
29	441 Bldg Use--Spiritual Direction	900	1,110	900	900
30	451 Bldg Use--Occasional	300	410	300	300
31	452 Bldg Use--Music Lessons	3,440	3,140	3,440	3,440
32	440 Bldg Use--Clutterers Anonymous	204	207	216	216
33	443 Bldg Use--Scottish Dancers	100	140	100	100
34	444 Bldg Use--BB Irish Pipe	2,000	2,216	2,000	2,000
35	445 Dellwood Rental	7,100	6,900	7,800	7,650
36	Total Building Use	62,089	52,059	66,936	57,486
37					
38	Other Income				
39	416 Int Checking	18	52	60	60
40	Total Other Income	18	52	60	60
41					
42	Total Income	437,060	420,497	470,102	424,617

St. Christopher's Episcopal Church
2015 Financial Recap
and 2016 Budget

	A	E	F	G	H
1		2016	2016	2017	2017
2		Mid year	FINAL	<i>Requested</i>	<i>FINAL</i>
43	Expenses:				
44	Salaries & Benefits				
45	500 Rector	73,972	73,972	76,192	73,972
46	504 Rector Phone Allowance	1,200	1,200	1,200	1,200
47	596 Youth Director	17,895	17,895	18,432	8,947
48	604 Music Organist Substitute	800	800	800	800
49	611 Parish Administrator	40,984	40,984	42,214	40,984
50	623 Music Director	41,694	41,694	42,945	41,694
51	630 Children's Ministries Director	18,826	18,826	19,391	9,413
52	Benefits				
53	502 Supply Priest	1,750	525	1,750	1,750
54	507 Auto Use	4,000	4,000	4,000	4,000
55	508 Continuing Education Clergy	1,000	0	2,000	2,000
56	XXX Music Dir. Continuing Ed	0	0	500	0
57	509 Medical Insurance - Clergy	15,098	16,551	19,500	19,500
58	510 Life Insurance Clergy	222	222	222	222
59	511 Life Insurance Staff	222	222	444	444
60	512 Pension - Rector	14,334	14,334	14,764	14,334
61	513 Pension - Staff	10,746	10,745	11,067	9,094
62	516 Disability Ins. - Staff	1,095	1,094	1,095	1,095
63	514 FICA Taxes	15,848	13,761	15,236	13,388
64	520 Professional Expense - Clergy	200	60	1,000	1,000
65	594 Medical - Staff	15,420	15,490	16,260	16,260
66	Total Salary & Benefits	275,306	272,377	289,013	260,097
67					
68	Christian Education				
69	519 Children's Ministries	1,400	1,332	1,500	1,500
70	528 Youth Programs & Activities	2,469	2,469	2,130	2,130
71	515 Adult Education	125	96	125	0
72	Total Christian Educ.	3,994	3,897	3,755	3,630
73					
74	Pastoral Care				
75	518 Hospitality/Reception/Fellowship	0	(215)	0	0
76	536 Library	0	50	125	125
77	SWAT Group	0	0	300	0
78	Total Pastoral Care	0	(165)	425	125

St. Christopher's Episcopal Church
2015 Financial Recap
and 2016 Budget

	A	E	F	G	H
1		2016	2016	2017	2017
2		Mid year	FINAL	<i>Requested</i>	<i>FINAL</i>
79					
80	Facilities				
81	564 Bldg. Services & Supplies	6,000	5,618	6,500	6,500
82	565 Snow Removal	4,000	1,950	5,000	4,338
83	566 Lawn Mowing	2,109	2,500	3,000	2,500
84	XXX Landscape Maintenance		0	5,000	0
85	563 Building Maintenance	4,000	4,796	5,750	5,750
86	562 Building Cleaning Svc	12,000	12,000	12,000	12,000
87	568 Carpet Cleaning		0	2,000	1,000
88	569 Heating	12,000	6,394	12,000	12,000
89	690 Electric	10,000	8,893	10,000	7,000
90	691 Outside Lighting	650	628	650	650
92	692 Water and Sewer	3,325	2,722	3,325	3,325
93	Total Facilities	54,084	45,501	65,225	55,063
94					
95	Insurance				
96	567 Comp. Prop & General Liability	12,540	11,489	13,414	13,414
97	681 Workers' Comp Ins.	600	579	1,200	1,200
98	Total Insurance	13,140	12,068	14,614	14,614
99					
100	Music				
101	533 Music Operations	15,000	15,000	17,891	15,000
102	605 Instrument Maintenance	1,800	1,188	1,600	1,600
103	Total Music	16,800	16,188	19,491	16,600
104					
105	Mission Opportunities				
106	571 Mission Ministry Support	55,496	55,496	54,898	54,898
107	Total Outreach/Advocacy	55,496	55,496	54,898	54,898

St. Christopher's Episcopal Church
2015 Financial Recap
and 2016 Budget

	A	E	F	G	H
1		2016	2016	2017	2017
2		Mid year	FINAL	<i>Requested</i>	<i>FINAL</i>
108					
109	Administration				
110	549 Bank Chgs--Fees	800	1,153	1,349	1,349
111	974 Stock Gift Costs & Gains	100	65	163	163
112	503 Copier	(3,500)	(3,747)	(3,500)	(3,500)
113	552 Equipment Maint./Agreements	3,145	3,042	3,300	3,300
114	553 Equipment	800	299	2,800	2,000
115	554 Office Supplies	5,000	3,845	5,000	5,000
116	555 Postage	1,800	1,117	1,800	1,158
117	559 Telephone	2,000	1,942	2,000	2,200
118	560 Copies/Printing	1,500	1,014	1,500	1,500
119	561 Traveler	60	46	60	60
120	587 Computer Software Support	1,300	1,388	1,400	1,400
121	598 Computer - Web Site	1,100	1,222	1,100	1,100
122	Total Administration	14,105	11,385	16,972	15,730
123					
124	Parish Wide				
125	522 Diocese Convention Delegates	0	115	1,600	0
126	541 Parish Directory	0	0	0	0
127	523 Memorial Book	0	0	0	0
128	Total Parish Wide	0	115	1,600	0
129					
130	Stewardship				
131	526 Stewardship	250	0		
132	535 Pledge Envelopes	0	248	250	0
133	Total Stewardship	250	248	250	0
134					
135	Vestry				
136	558 Annual Report	65	60	110	110
137	Total Vestry	65	60	110	110
138					
139	Worship				
140	531 Altar Guild	1,300	1,185	1,250	1,250
141	572 Bulletins	2,500	2,144	2,500	2,500
142	Total Worship	3,800	3,329	3,750	3,750
143					
144	Total Expense	437,040	420,497	470,102	424,617
145					
146	Income - Expense	20	0	0	0

St Christopher's Episcopal Church

Dedicated Accounts

December 2016

Account Shortcut and Description	Beginning Balance	Month Credits	Month Debits	YTD Credits	YTD Debits	Ending Balance
General Fund						
Building Use						
Donor Restricted						
930 Building Use Damage Deposit	0.00	0.00	0.00	300.00	0.00	300.00
Donor Restricted Totals:	0.00	0.00	0.00	300.00	0.00	300.00
Building Use Totals:	0.00	0.00	0.00	300.00	0.00	300.00
Designated Asset						
Repairs & Maintenance						
1200 Reserve for Repair and Replace	1,001.65	0.00	0.00	40,028.87	41,030.52	0.00
Repairs & Maintenance Totals:	1,001.65	0.00	0.00	40,028.87	41,030.52	0.00
Diocesan Pledge						
1210 Reserve for MMS	6,531.17	0.00	1,476.39	0.00	5,905.54	625.63
Diocesan Pledge Totals:	6,531.17	0.00	1,476.39	0.00	5,905.54	625.63
Designated Asset Totals:	7,532.82	0.00	1,476.39	40,028.87	46,936.06	625.63
Donor Restricted						
Capital Campaign						
1100 2012 Capital Campaign	6,936.00	20.00	0.00	20,905.00	21,888.96	5,952.04
Capital Campaign Totals:	6,936.00	20.00	0.00	20,905.00	21,888.96	5,952.04
Donor Restricted						
1041 Rector Discretionary	1,074.37	300.00	716.37	3,522.97	3,926.99	670.35
1067 Organ Upkeep & Update Fund	1,182.42	0.00	0.00	0.00	0.00	1,182.42
669 Youth Ministries--Donor Res	329.98	0.00	379.30	1,000.00	379.30	950.68
902 Building Renewal Fund	8,039.10	14,103.14	0.00	19,103.14	12,727.24	14,415.00
912 Funeral Fund	1,099.24	0.00	0.00	4,050.28	4,163.62	985.90
915 Childrens Choir	69.03	0.00	0.00	0.00	0.00	69.03
916 Fellowship Fund	11.93	0.00	0.00	0.00	11.93	0.00
917 Garden Fund	105.41	0.00	0.00	0.00	54.72	50.69
919 Fund Raising for Mission Opportunities	12,651.29	914.00	307.61	8,321.63	7,851.90	13,121.02
920 Music Enrichment	5,149.65	1,582.00	2,969.63	2,600.00	3,819.63	3,930.02
921 Gift of Music	452.19	0.00	121.14	0.00	234.77	217.42
922 Altar Guild Ded	2,881.03	1,183.00	0.00	2,765.23	1,414.27	4,231.99
923 Webb/Dwyer Guest Musician Fund	3,415.50	0.00	0.00	1,220.00	450.00	4,185.50
924 Couples Bridge	251.02	0.00	0.00	150.00	150.00	251.02
925 Kitchen Fund	3,701.17	0.00	0.00	0.00	826.90	2,874.27
926 Snow Shoveling	144.60	0.00	0.00	0.00	0.00	144.60
927 In-House Feeding Ministries	2,355.85	0.00	701.31	2,736.00	4,995.56	96.29
933 Over 55 Club Dedicated	33.14	0.00	0.00	136.54	169.68	0.00
935 Women's Bridge	188.85	0.00	0.00	20.00	0.00	208.85

Account Shortcut and Description	Beginning Balance	Month Credits	Month Debits	YTD Credits	YTD Debits	Ending Balance
941 Children's Ministries Ded	9,731.71	0.00	350.00	0.00	1,490.08	8,241.63
943 Mission Opportunities	1,133.38	0.00	0.00	120.00	250.00	1,003.38
947 Green Team	5,489.92	0.00	2,500.00	6,062.10	7,072.75	4,479.27
975 Gifts of Hope	597.40	90.00	97.81	100.00	157.81	539.59
993 UTO	0.00	0.00	152.62	152.62	152.62	0.00
998 Donor Restricted--Pass Thru	947.07	1,298.63	801.00	3,859.63	4,309.07	497.63
Donor Restricted Totals:	61,035.25	19,470.77	9,096.79	55,920.14	54,608.84	62,346.55
Donor Restricted Totals:	67,971.25	19,490.77	9,096.79	76,825.14	76,497.80	68,298.59
Memorials						
 Donor Restricted						
1047 Memorial - Brown, Jim	500.00	0.00	0.00	0.00	0.00	500.00
938 Memorial - vanZandt, Susie	0.00	0.00	0.00	1,600.00	0.00	1,600.00
939 Memorial - Richards, Jim	0.00	50.00	0.00	2,380.00	0.00	2,380.00
945 Memorial- Abdullai, Mattie	0.00	0.00	0.00	40.00	0.00	40.00
949 Memorial - Field, Noel	0.00	0.00	0.00	895.00	0.00	895.00
965 Memorials--Rollin West	585.00	0.00	0.00	0.00	252.98	332.02
971 Memorial - Armitage, Joe	112.36	0.00	0.00	0.00	79.62	32.74
972 Memorial - Olson, Ann	500.00	0.00	0.00	0.00	0.00	500.00
Donor Restricted Totals:	1,697.36	50.00	0.00	4,915.00	332.60	6,279.76
Memorials Totals:	1,697.36	50.00	0.00	4,915.00	332.60	6,279.76
<i>General Fund Totals:</i>	77,201.43	19,540.77	10,573.18	122,069.01	123,766.46	75,503.98
Columbarium						
 Donor Restricted						
 Donor Restricted						
1015 Columbarium	5,566.77	100.00	0.00	9,350.00	1,065.00	13,851.77
Donor Restricted Totals:	5,566.77	100.00	0.00	9,350.00	1,065.00	13,851.77
Donor Restricted Totals:	5,566.77	100.00	0.00	9,350.00	1,065.00	13,851.77
<i>Columbarium Totals:</i>	5,566.77	100.00	0.00	9,350.00	1,065.00	13,851.77
Endowments						
 Endowments						
 Endowments/Planned Giving						
2018 Endowment Fund	383,575.42	4,061.11	0.00	30,964.86	61,675.64	352,864.64
Endowments/Planned Giving Totals:	383,575.42	4,061.11	0.00	30,964.86	61,675.64	352,864.64
Endowments Totals:	383,575.42	4,061.11	0.00	30,964.86	61,675.64	352,864.64
<i>Endowments Totals:</i>	383,575.42	4,061.11	0.00	30,964.86	61,675.64	352,864.64
Savings/Checking						
 Donor Restricted						
 Donor Restricted						
905 Rector's Discretionary Fund	109.14	0.00	0.00	0.00	100.00	9.14

Account Shortcut and Description	Beginning Balance	Month Credits	Month Debits	YTD Credits	YTD Debits	Ending Balance
Donor Restricted Totals:	109.14	0.00	0.00	0.00	100.00	9.14
Donor Restricted Totals:	109.14	0.00	0.00	0.00	100.00	9.14
<i>Savings/Checking Totals:</i>	109.14	0.00	0.00	0.00	100.00	9.14
Total for selected dedicated accounts:	466,452.76	23,701.88	10,573.18	162,383.87	186,607.10	442,229.53